

# Entry Rules

## Screenshot1

- Buy signal of a particular pair will be generated once all the following indicators agree (if pair is selected). (Refer to screenshot3,4)

- TDI

- Price line (green) up crosses signal line (red) -> 

TP	TC
■	■
- Price line (green) is above base line (yellow) (optional) -> 

TB	TG	TV
40	0.2	50.7
- TG(tdi\_price\_current - tdi\_price\_previous) is larger than about 2 (optional)-> 

TG
2.7
- TDI (TV) should be less than 68 (overbought limit) (optional)-> 

TG	TV
2.7	51.2

- EMA

- Price is above 200 EMA
  - HA close price is above 10 EAM
- | EMA | PA     | EMA | HA0    |
|-----|--------|-----|--------|
| 200 | 1.0103 | 10  | 1.0136 |
|     | 1.0143 |     | 1.0139 |

- Round Number (optional)

- Price is not close to upper round number within round\_number limit
- Example: for EURUSD, set round\_number\_limit=10, 1.1095 (5 pips away from 1.1100) is not OK for BUY, 1.1050 (50 pips away from 1.1100) is OK for BUY.

# Entry Rules

## Screenshot2

- Sell signal of a particular pair will be generated once all the following indicators agree (if pair is selected). (Refer to screenshot3,4)

- TDI

- Price line (green) down crosses signal line (red) -> 

TP	TC
■	■
- Price line (green) is below base line (yellow) (optional) -> 

TB	TG	TV
60	-0.5	53.1
- TG(tdi\_price\_current - tdi\_price\_previous) is less than about -2 (optional)-> 

TG
-2.1
- TDI (TV) should be larger than 32 (overbought limit) (optional)-> 

TG	TV
-2.1	57.1

- EMA

- Price is below 200 EMA
- HA close price is below 10 EAM

EMA		EMA	
200	PA	10	HA0
1.5204	1.5193	1.5192	1.5191

- Round Number (optional)

- Price is not close to lower round number within round\_number limit
- Example: for EURUSD, set round\_number\_limit=10, 1.1005 (5 pips away from 1.1000) is not OK for SELL, 1.1050 (50 pips away from 1.1000) is OK for SELL.

# Screenshot3

2 TDI Base, Momentum and Value

4 EAM10 Confirmation

1 TDI Cross

3 EMA200 Confirmation

5 Round Number Filter

## Trading

Pair	Sprd	TP	TC	TB	TG	TV	EMA 200	PA	EMA 10	HA0	RN	Buy	Sell	Symbol	Profit
AUDCAD	1.2			59	-6.5	56.3	1.0153	1.0177	1.0177	1.0177	77.0			AUDCAD	0.00
AUDCHF	1.0			66	-10.7	66.1	0.7577	0.7620	0.7615	0.7619	20.0			AUDCHF	0.00
AUDJPY	0.5			68	-6.3	68.5	79.43	79.93	79.88	79.90	93.0			AUDJPY	0.00
AUDNZD	1.4			59	-3.0	64.8	1.0656	1.0692	1.0689	1.0692	91.0			AUDNZD	0.00
AUDUSD	0.3			62	-12.8	41.6	0.7622	0.7625	0.7633	0.7623	24.0			AUDUSD	0.00
CADCHF	1.0			61	-5.2	62.7	0.7463	0.7487	0.7482	0.7486	87.0			CADCHF	0.00
CADJPY	1.0			61	2.5	56.0	78.23	78.53	78.48	78.51	53.0			CADJPY	0.00
CHFJPY	0.9			50	9.8	41.2	104.82	104.89	104.89	104.87	88.0			CHFJPY	0.00
EURAUD	0.8			37	12.3	42.1	1.4281	1.4248	1.4239	1.4248	47.0			EURAUD	0.00
EURCAD	1.3			45	3.2	50.1	1.4500	1.4501	1.4493	1.4501	0.0			EURCAD	0.00
EURCHF	0.3			64	-5.1	70.5	1.0822	1.0858	1.0844	1.0857	58.0			EURCHF	0.00
EURGBP	0.5			51	3.9	71.6	0.8906	0.8957	0.8917	0.8950	56.0			EURGBP	0.00
EURJPY	0.7			57	10.9	62.1	113.44	113.89	113.75	113.85	88.0			EURJPY	0.78
EURNZD	2.6			46	6.8	55.9	1.5219	1.5233	1.5220	1.5235	33.0			EURNZD	0.00
EURUSD	0.0			51	-2.7	25.5	1.0886	1.0864	1.0870	1.0862	63.0			EURUSD	0.00
GBPAUD	1.7			38	-3.7	22.6	1.6035	1.5906	1.5967	1.5917	5.0			GBPAUD	0.00
GBPCAD	1.6			46	-7.7	30.8	1.6282	1.6189	1.6251	1.6201	88.0			GBPCAD	0.00
GBPCHF	2.0			56	-15.4	44.8	1.2151	1.2121	1.2160	1.2129	21.0			GBPCHF	0.00
GBPJPY	1.4			54	-7.0	32.7	127.37	127.14	127.56	127.20	14.0			GBPJPY	0.00
GBPNZD	1.8			46	-6.3	34.0	1.7088	1.7008	1.7068	1.7021	7.0			GBPNZD	0.00
GBPUUSD	0.7			50	-8.5	23.2	1.2223	1.2128	1.2189	1.2136	28.0			GBPUUSD	0.00
NZDCAD	1.4			51	-2.7	45.9	0.9526	0.9518	0.9521	0.9517	18.0			NZDCAD	0.00
NZDCHF	1.5			59	-9.3	59.7	0.7109	0.7127	0.7124	0.7125	26.0			NZDCHF	0.00
NZDJPY	1.2			59	-0.2	51.7	74.52	74.75	74.73	74.72	75.0			NZDJPY	0.00
NZDUSD	0.6			54	-6.5	32.7	0.7152	0.7131	0.7141	0.7129	30.0			NZDUSD	0.00
USDCAD	0.7			45	5.2	64.8	1.3320	1.3348	1.3333	1.3350	47.0			USDCAD	0.00
USDCHF	0.4			59	-0.5	82.5	0.9940	0.9994	0.9977	0.9995	94.0			USDCHF	0.00
USDJPY	0.2			58	9.5	79.2	104.20	104.83	104.65	104.82	83.0			USDJPY	0.00

Profit Baskets= 0  
Basket TP = \$ 15.00 Highest= \$ 0.80  
Loss Baskets= 0  
Basket SL = \$- 15.00 Lowest= \$- 0.00

0.78

CLOSE ALL

CLOSE PROFIT

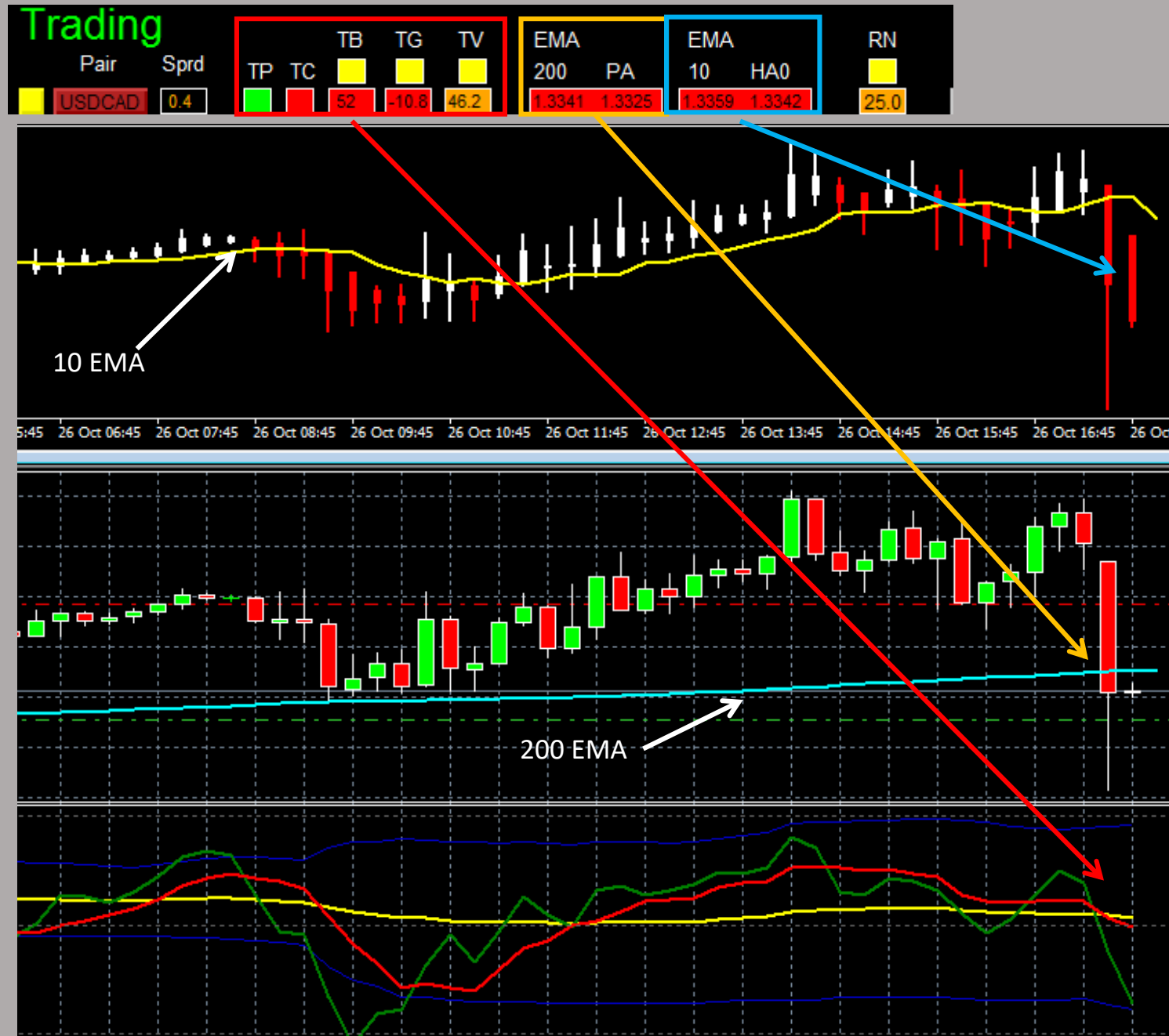
CLOSE LOSS

AutoTrade

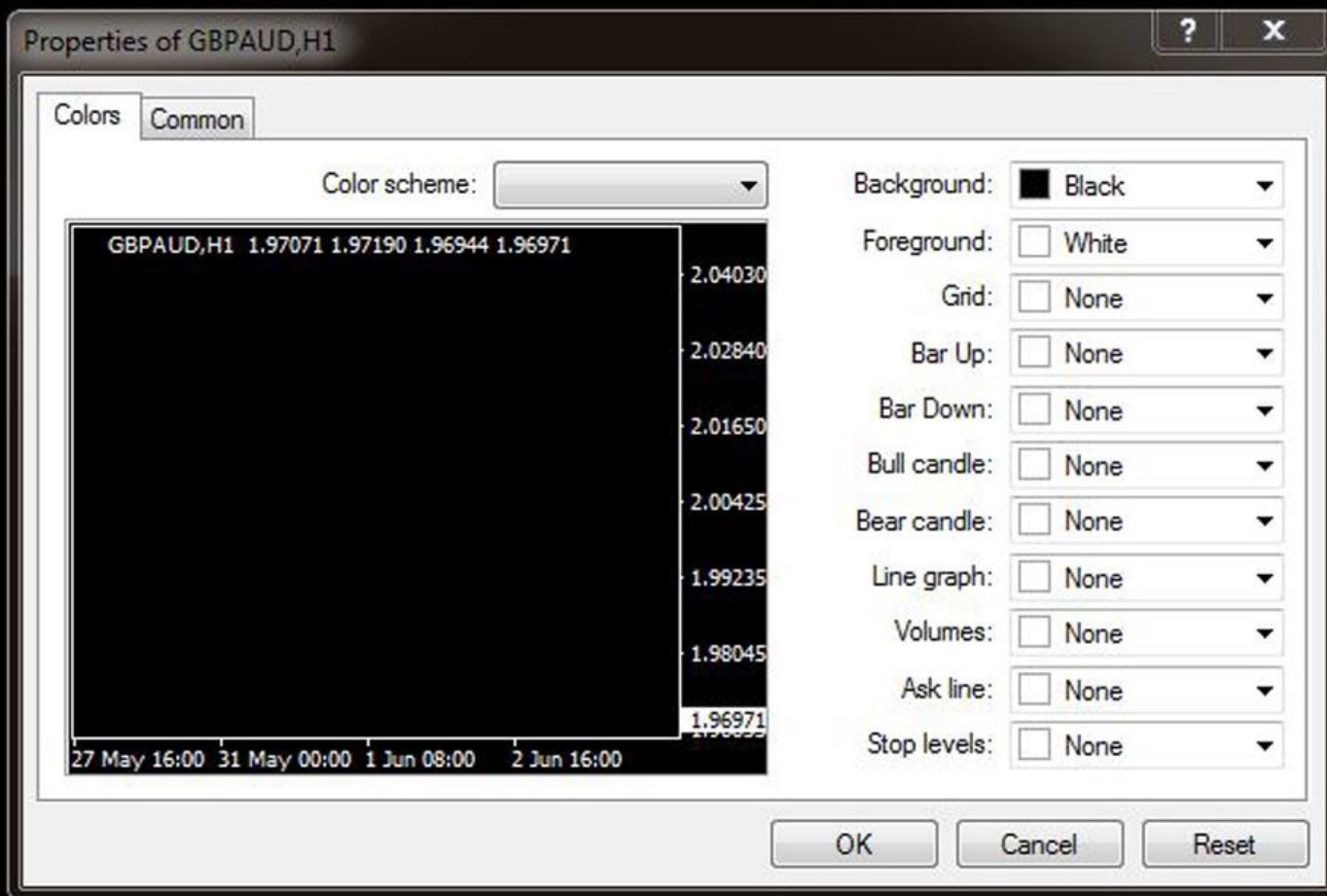
ON

All None EUR USD GBP  
JPY AUD CAD NZD CHF

# Screenshot4



GBPAUD,H1 1.97071 1.97190 1.96944 1.96971



Screenshot6

6 May 2016 9 May 08:00 10 May 16:00 12 May 00:00 13 May 08:00 16 May 16:00 18 May 00:00 19 May 08:00 20 May 16:00 24 May 00:00 25 May 08:00 26 May 16:00 30 May 04:00

GBPAUD,H1

EURUSD,M1

Trading

4 Current and Previous TDI green vs red status Panel

5 Indicator Status Panel

6 TDI Base Panel

7 TDI Momentum Panel

8 TDI Price Value Panel

1 Pair Tick Button

2 Pair Symbol Button

3 Spread Column

	Pair	Sprd	TP	TC	TB	TG	TV
<input type="checkbox"/>	AUDCAD	1.3	<div></div>	<div></div>	56	1.1	55.3
<input type="checkbox"/>	AUDCHF	2.5	<div></div>	<div></div>	36	1.1	44.0
<input type="checkbox"/>	AUDJPY	3.7	<div></div>	<div></div>	40	0.2	50.7
<input type="checkbox"/>	AUDNZD	3.3	<div></div>	<div></div>	40	2.0	45.4
<input type="checkbox"/>	AUDUSD	0.8	<div></div>	<div></div>	37	-0.3	53.1
<input type="checkbox"/>	CADCHF	2.4	<div></div>	<div></div>	32	0.7	37.5
<input type="checkbox"/>	CADJPY	3.1	<div></div>	<div></div>	38	-0.5	43.8
<input type="checkbox"/>	CHFJPY	5.3	<div></div>	<div></div>	52	-1.4	57.2
<input type="checkbox"/>	EURAUD	2.4	<div></div>	<div></div>	60	-0.5	53.1
<input type="checkbox"/>	EURCAD	1.9	<div></div>	<div></div>	64	-0.9	59.9
<input type="checkbox"/>	EURCHF	2.0	<div></div>	<div></div>	38	2.3	44.8
<input type="checkbox"/>	EURGBP	2.0	<div></div>	<div></div>	45	-0.3	49.0
<input type="checkbox"/>	EURJPY	3.0	<div></div>	<div></div>	46	0.2	55.8
<input type="checkbox"/>	EURNZD	4.2	<div></div>	<div></div>	49	2.3	48.9
<input type="checkbox"/>	EURUSD	0.3	<div></div>	<div></div>	42	-1.2	58.5
<input type="checkbox"/>	GBPAUD	8.2	<div></div>	<div></div>	62	-1.6	51.4
<input type="checkbox"/>	GBPCAD	9.3	<div></div>	<div></div>	63	-0.6	56.8
<input type="checkbox"/>	GBPCHF	4.6	<div></div>	<div></div>	49	0.1	47.8
<input type="checkbox"/>	GBPJPY	7.4	<div></div>	<div></div>	50	-0.7	52.4
<input type="checkbox"/>	GBPNZD	12.4	<div></div>	<div></div>	55	-0.4	47.7
<input type="checkbox"/>	GBPUSD	3.5	<div></div>	<div></div>	50	-1.5	54.7
<input type="checkbox"/>	NZDCAD	4.4	<div></div>	<div></div>	65	-1.9	58.5
<input type="checkbox"/>	NZDCHF	3.3	<div></div>	<div></div>	44	-0.9	47.3
<input type="checkbox"/>	NZDJPY	3.7	<div></div>	<div></div>	47	-1.6	54.1
<input type="checkbox"/>	NZDUSD	1.2	<div></div>	<div></div>	45	-2.1	57.1
<input type="checkbox"/>	USDCAD	0.9	<div></div>	<div></div>	66	1.4	55.3
<input type="checkbox"/>	USDCHF	1.4	<div></div>	<div></div>	48	3.4	35.4
<input type="checkbox"/>	USDJPY	1.9	<div></div>	<div></div>	50	1.6	47.4

Screenshot7

	EMA 200 PA		EMA 10 HA0		RN ■
	1.0103	1.0143	1.0136	1.0139	42.0
	0.7580	0.7556	0.7555	0.7557	55.0
9 200 EMA Value →	79.28	78.95	78.93	78.92	5.0
	1.0632	1.0616	1.0617	1.0617	15.0
	0.7635	0.7604	0.7602	0.7605	4.0
	0.7502	0.7448	0.7453	0.7452	48.0
	78.46	77.83	77.87	77.86	83.0
	104.58	104.47	104.46	104.47	46.0
10 Current Price →	1.4309	1.4309	1.4308	1.4306	9.0
	1.4448	1.4515	1.4503	1.4507	11.0
	1.0840	1.0813	1.0811	1.0812	13.0
	0.8920	0.8897	0.8898	0.8898	97.0
	113.37	112.99	112.95	112.98	99.0
	1.5204	1.5193	1.5192	1.5191	93.0
	1.0919	1.0882	1.0878	1.0881	82.0
11 200 EMA Signal Panel →	1.6031	1.6076	1.6078	1.6074	75.0
	1.6200	1.6307	1.6298	1.6300	7.0
	1.2156	1.2149	1.2149	1.2149	49.0
	127.09	126.94	126.92	126.93	93.0
	1.7044	1.7067	1.7071	1.7067	67.0
	1.2241	1.2227	1.2224	1.2226	26.0
	0.9502	0.9551	0.9545	0.9547	51.0
	0.7128	0.7116	0.7115	0.7115	15.0
	74.55	74.35	74.34	74.35	34.0
	0.7181	0.7162	0.7160	0.7162	61.0
	1.3233	1.3339	1.3333	1.3333	38.0
	0.9927	0.9937	0.9939	0.9937	36.0
	103.83	103.83	103.83	103.83	82.0

12 10 EMA Value

13 HA Close Value

14 10 EMA Signal Panel

15 Round Number Panel  
(last two digits)







23 Profit Baskets

Profit Baskets=

0

24 Basket TP

Basket TP = \$

15.00

Highest= \$

0.00

25 Basket Highest

26 Loss Baskets

Loss Baskets=

0

27 Basket SL

Basket SL = \$-

15.00

Lowest= \$-

0.00

28 Basket Lowest

29 Current Basket  
Profit

0.00

Screenshot10

30 Close All

CLOSE ALL

CLOSE PROFIT

CLOSE LOSS

31 Close Profit

32 Close Loss

Trading

33 Session Monitor Panel

34 AutoTrade Monitor Panel

35 Pair/Currency Selection Button

Screenshot11

AutoTrade

ON

All

None

EUR

USD

GBP

JPY

AUD

CAD

NZD

CHF

## Screenshot12

Variable	Value
Use AutoTrade	false
Send Alert upon Signal	false
Send Notification upon Singal	false
Single pair TP in pips (0=no TP)	25.0
Single pair SL in pips (0=no SL)	25.0
Use trigger Price cross MA1	true
Use trigger Price cross MA2	false
Use trigger Price cross MA3	false
Use trigger MA1 cross MA2	false
Use trigger MA1 cross MA3	false
Use trigger MA2 cross MA3	false
Use Price as Single Trend Filter	true
Use MA1 as Single Trend Filter	true
Use MA2 as Single Trend Filter	true
Use MA3 as Single Trend Filter	true
Use Price-MA1 as Double Trend Filter	true
Use Price-MA2 as Double Trend Filter	false
Use Price-MA3 as Double Trend Filter	false
Use MA1-MA2 as Double Trend Filter	true
Use MA1-MA3 as Double Trend Filter	false
Use MA2-MA3 as Double Trend Filter	true
MA Timeframe of MA1/MA2/MA3	MA_H1
MA Period of MA1	8
MA Method of MA1	EMA
MA Applied Price of MA1	MA_Close_Price
MA Period of MA2	24
MA Method of MA2	EMA
MA Applied Price of MA2	MA_Close_Price
MA Period of MA3	72
MA Method of MA3	EMA
MA Applied Price of MA3	MA_Close_Price
Magic Number	12345
Lot Size	0.01
Basket TP in \$	15
Basket SL in \$	15
M...	...

Once alert/notification of a particular pair has been sent, the next alert/notification of that pair will be sent after 5 minutes upon signal.

Basket means all active (open) positions opened by this dashboard with the same magic number. The basket profit is the total profit of all these active positions

# Backup Slides

- B

## **Note**

**Note1:** Basket means all active (open) positions opened by this dashboard with the same magic number. The basket profit is the total profit of all these active positions. e.g. Dashboard open 10 positions (not close yet), each order has a profit of \$2. So the total profit is  $10 * \$2 = \$20$ . If the basket take profit is \$20, then the basket TP will be hit.

**Note2:** autotrade will open at most 1 position per pair based on signal generated. If signal occurs but position already exists for a particular pair, no order will be sent. However, you can manually click on 'buy' and/or 'sell' button to any number of positions you want (click once send one order).

**Note3:** Once alert/notification of a particular pair has been sent, the next alert/notification of that pair will be sent after 5 minutes upon signal. The alert and notification are implemented in this way to make sure you receive them once during a certain period instead of numerous alerts/notification coming to you continuously.

## **Screenshot12**